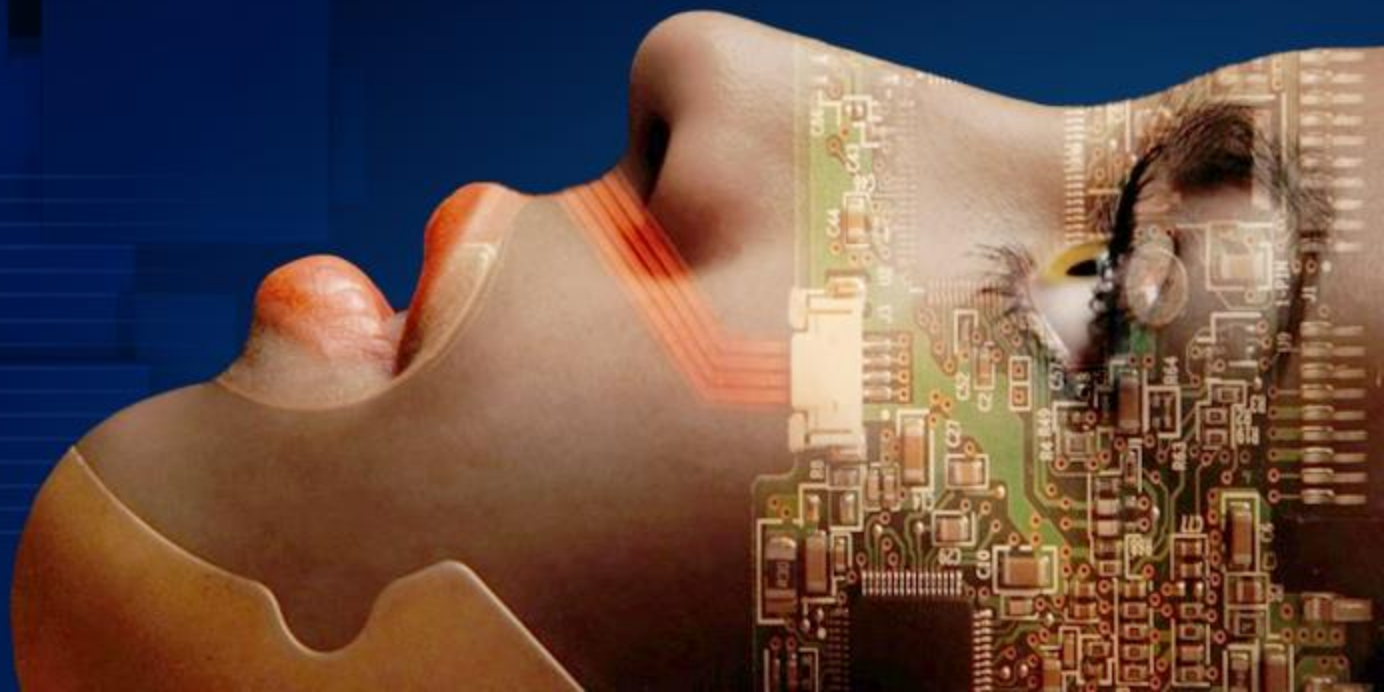


# Dumping Action Detection in Real World

- Deep Learning and its Application -

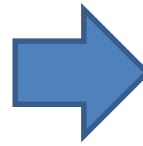
Jongyoul Park



# DeepView – Visual Intelligence Platform



Human  
Visual  
Intelligence



A man ride a skateboard  
in the park

Man  
Ride

Skateboard  
People

Pence  
Tree

Park  
Bus

Visual  
Intelligence

Visual Intelligence understands various objects and behaviors in the image semantically

Understanding individual Images  
(Visual Intelligence SW)

Large Scale Machine learning  
(Visual Big-Data Platform)

## 1. Context Understanding

Object Understanding

Action Understanding

Visual Taxonomy  
시각 텍사노미

Visual Data Bank  
데이터 뱅크

## 2. Systematization

Algorithm Pipeline

Parallel & Distributed  
Computing

# Visual Intelligence - Step



## Unstructured Image/Video Data



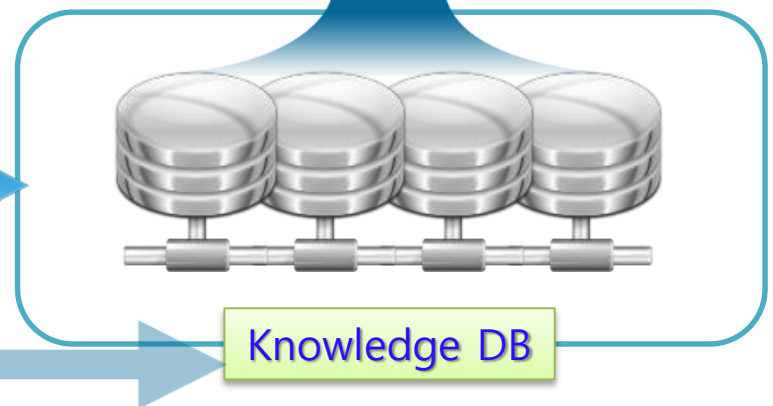
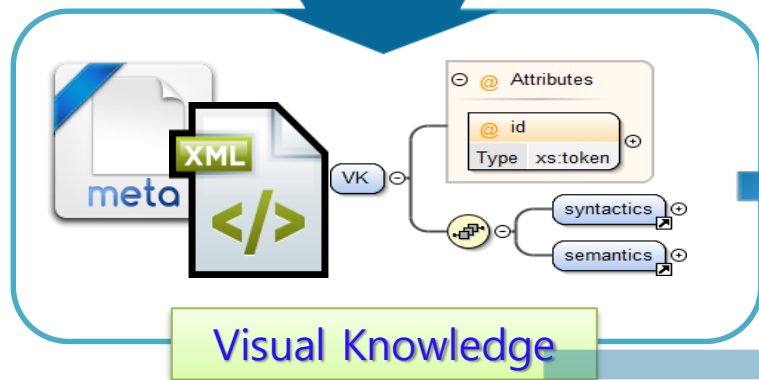
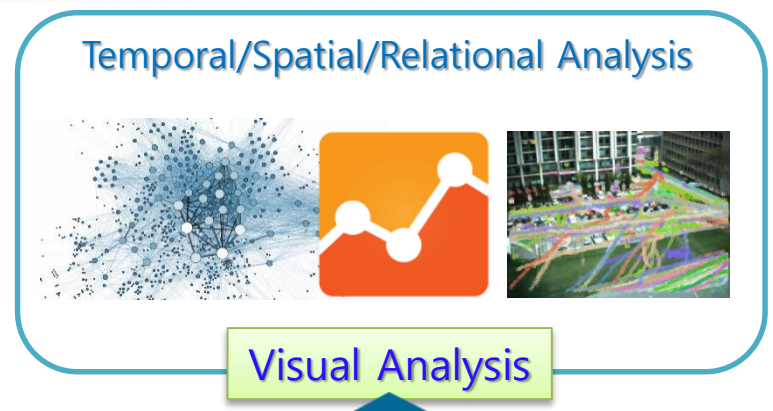
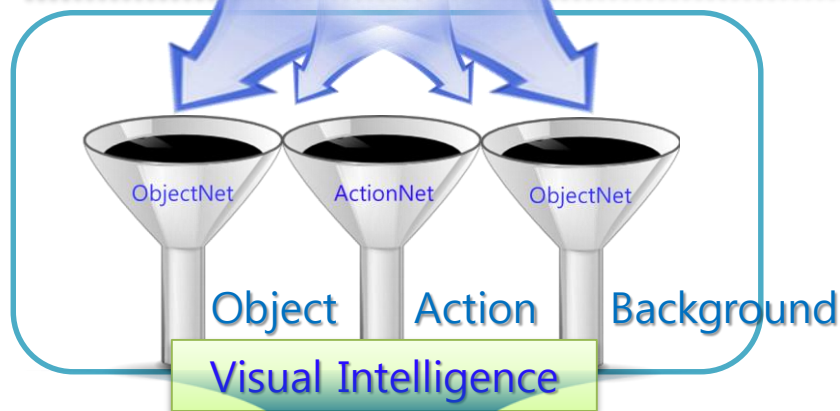
## Application



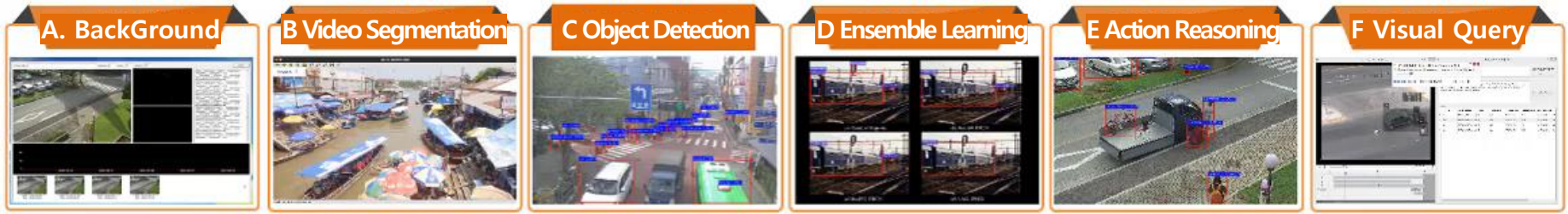
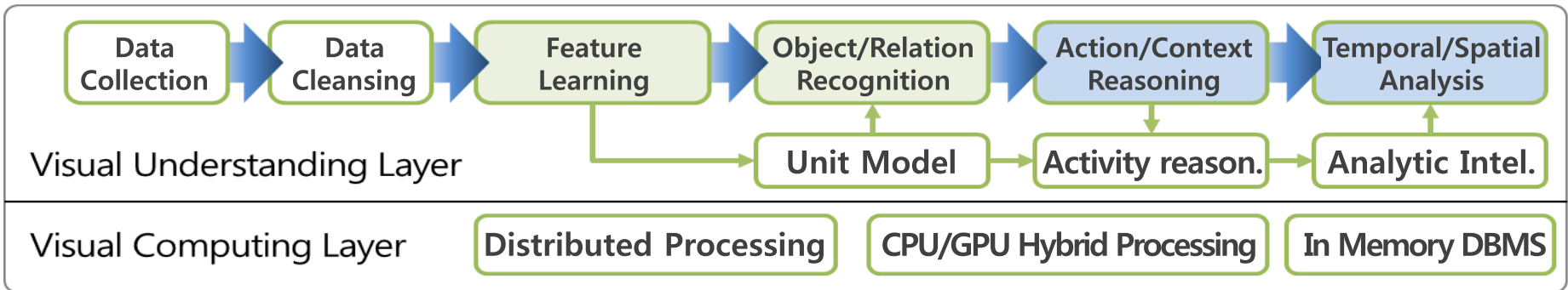
Context based Search



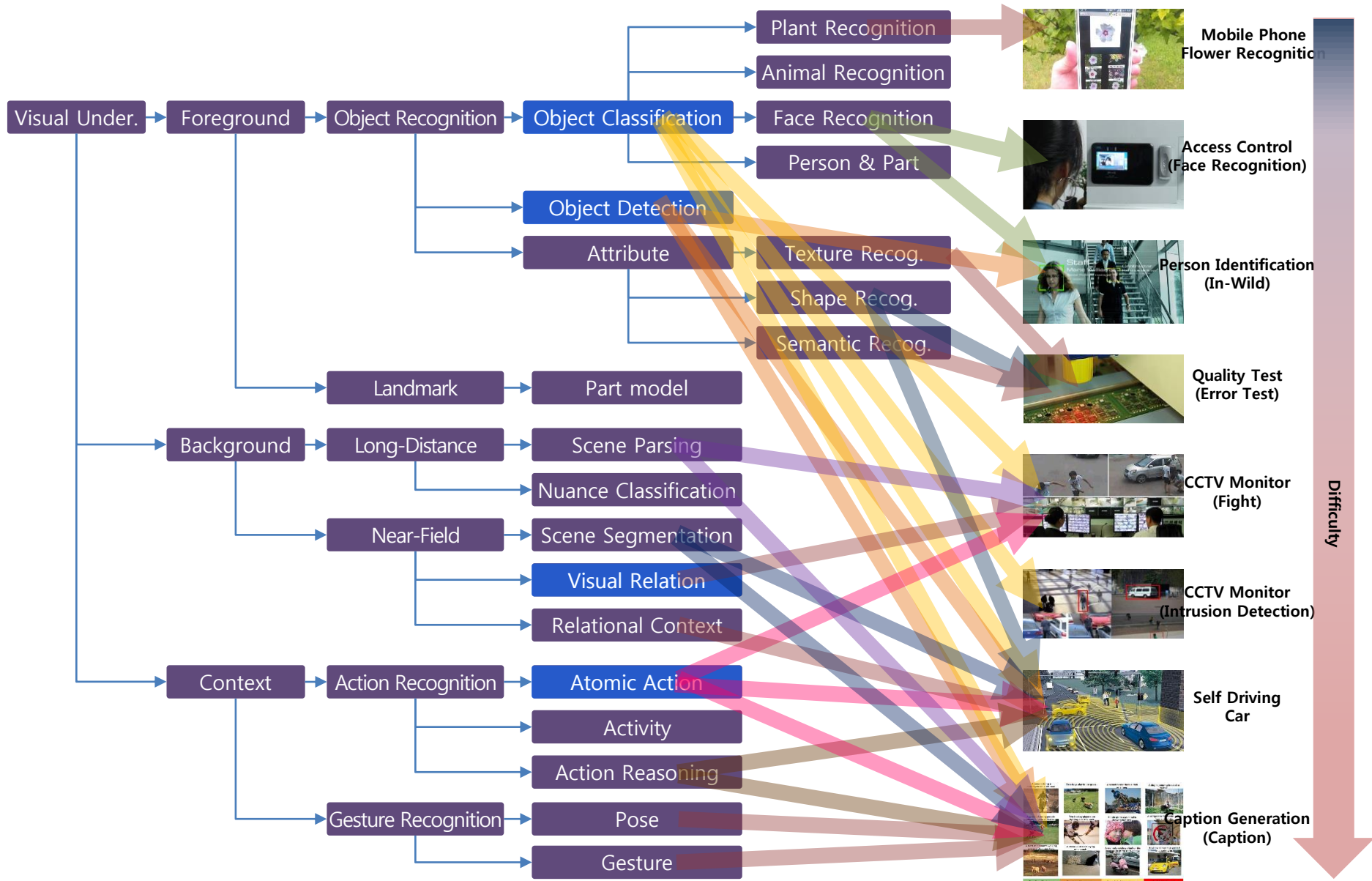
CCTV Control Center



# Visual Intelligence Platform



# Visual Intelligence & Dumping Action



# Trash Heap in City



Trash Heap is City's major problem in an alley entrance



Intelligent CCTV solution not working

Everyone did not care the warning message  
Because it is **not recognition me and my action**

# Dumping Action Detection

## Challenges



The behavior is inconsistent

Ex. Dumping, put down, Invisible action



Garbage has various shape

Ex. Box, Plastic Bag, Styrofoam



Too small, bag



Camera angle

## Approach



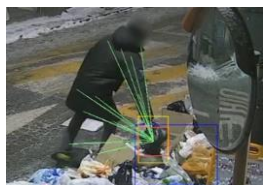
Moving Area Detect



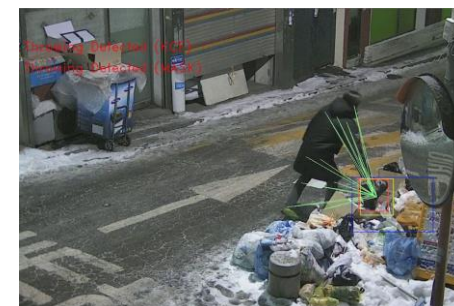
Person Tracking



Garbage Detection

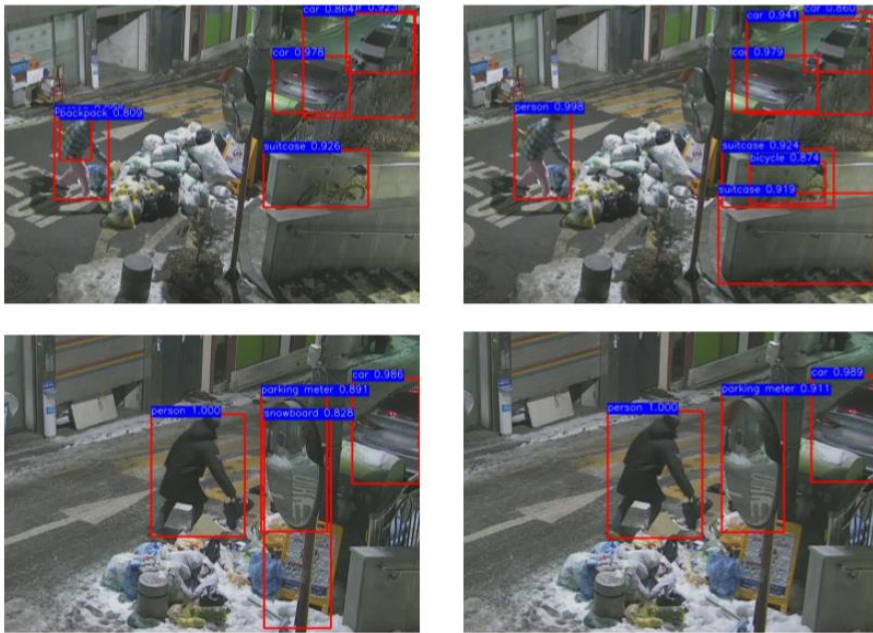


Relational Reasoning



# Comparison the detection

## General Detector



Traditional Object Detector is not working  
Results of Faster R-CNN using MS COCO

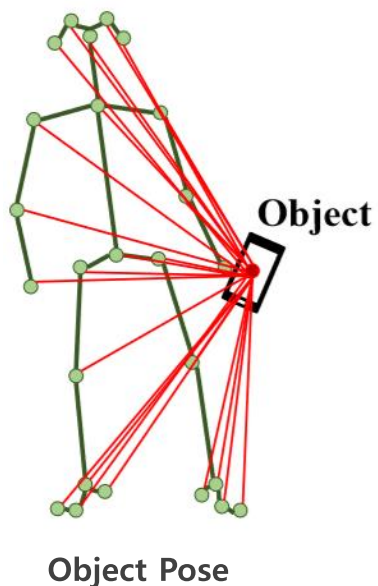
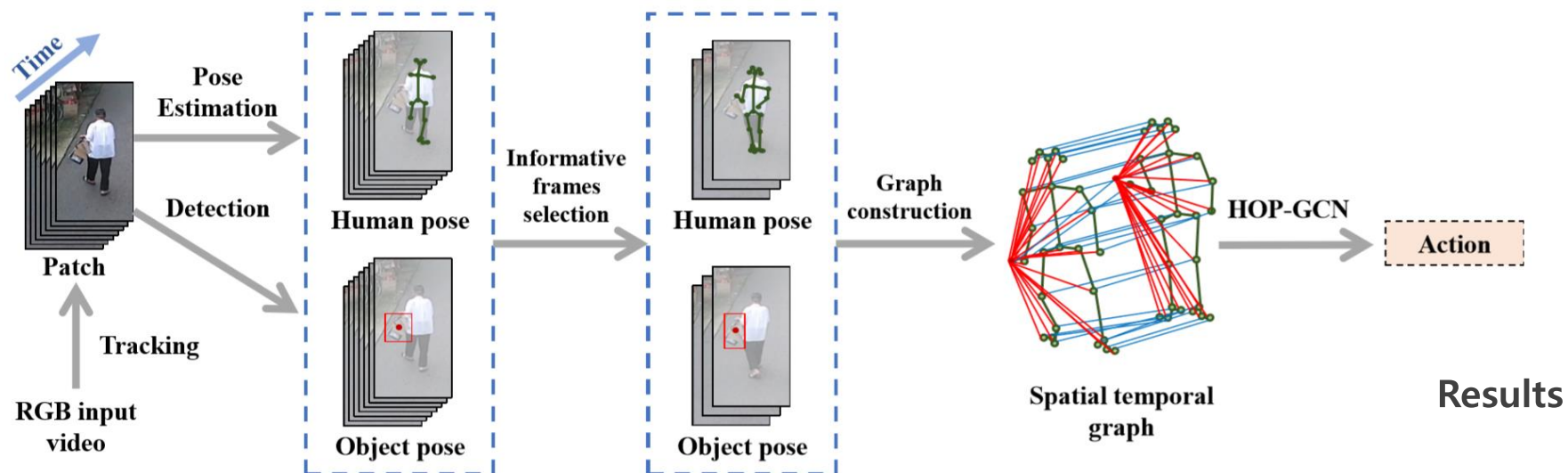
## Our Detector



Human related Object Pose based Detector  
Results of our simple object detector



# Pose and Action Recognition

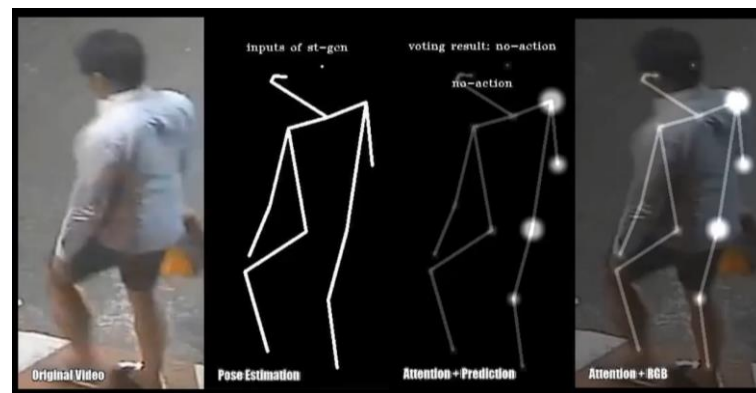


Comparisons with the state-of-the-art and baseline methods on the illegal dumping dataset

Method	Acc.(%)
ST-GCN [33]	83.43
HOP-GCN (ours)	86.74

Comparisons with the state-of-the-art and baseline methods on the ICVL dataset

Method	Acc.(%)
ST-GCN [33]	86.05
HOPE-Net (ours)	87.21

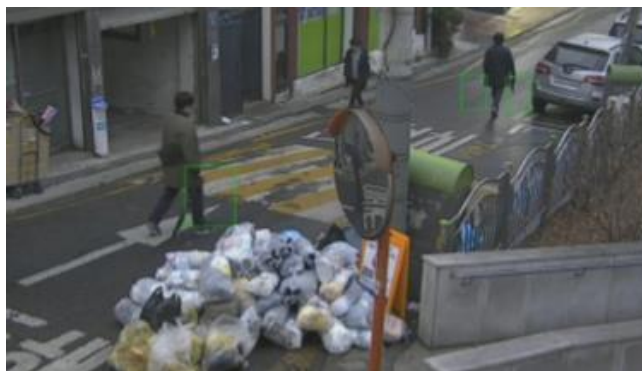


# Dumping Action Detected



Qualitative results of dumping action detection

Normal event  
No dumping action



A person who does not carry an object



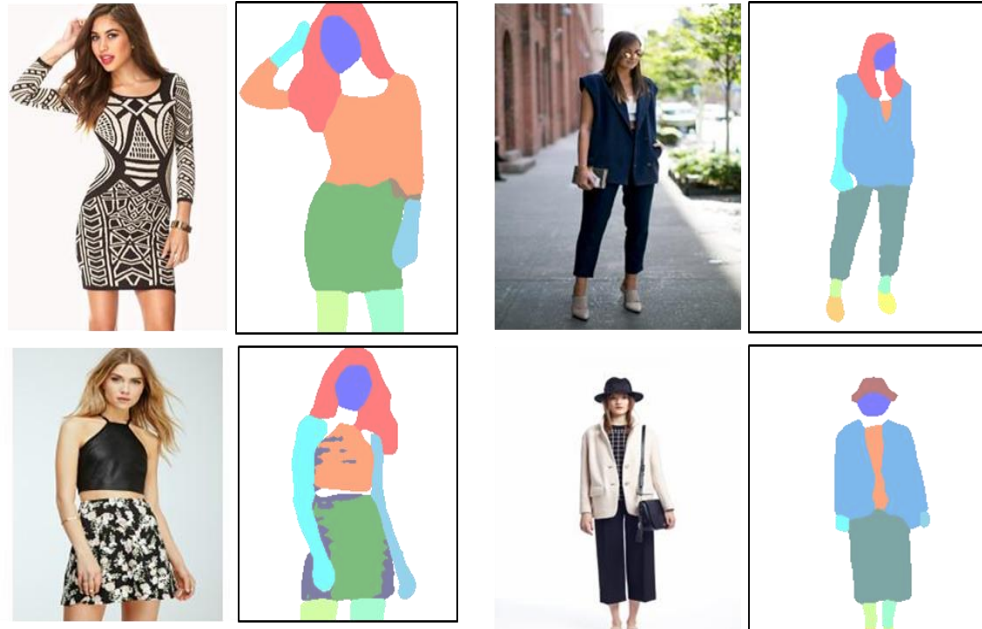
A person just carry an object

# Results





## Understanding Human





*Thanks*