

Global Commercialization Conference

Workshop for Innovative Development



KAIST

Rogério Higa
Business Development

Daejeon, May 2018

1

About Brazil

4

Business Model

7

Partners

3

Platform Model

6

Ucity

2

About Union TI

5

Ufarm

AGENDA

BRAZIL

at a glance

- Population: 207M (est. 2017 IBGE)
- Area: 8515767.049 km² (5th largest)
- GDP: US\$2.054 trillion (8th position – 2017 IMF)
Agribusiness (23.5% of GDP)
- IDH: 0.754 (79th position – 2017 report)
- Labor Force: 120M (2017 est.)
Agriculture 8%; Industry 22%; Services 70%



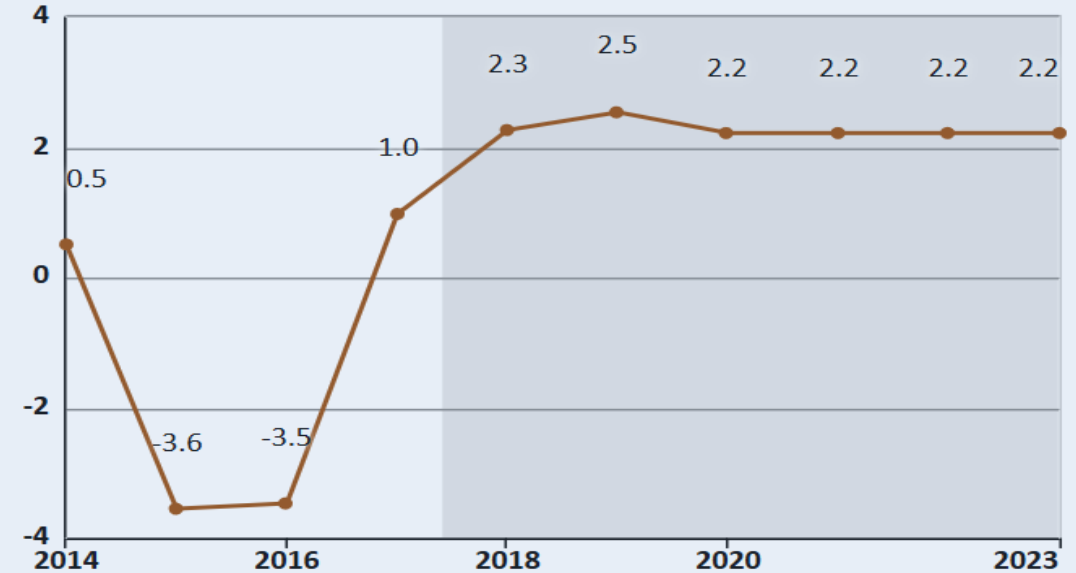
BRAZIL

opportunities

- Agribusiness 23.5% of GDP, 8% labor workforce
- 85% of Brazilian population live in cities. Security is the main concern
- Economy recovery
- Challenging environment (example: taxes, regulatory, etc)

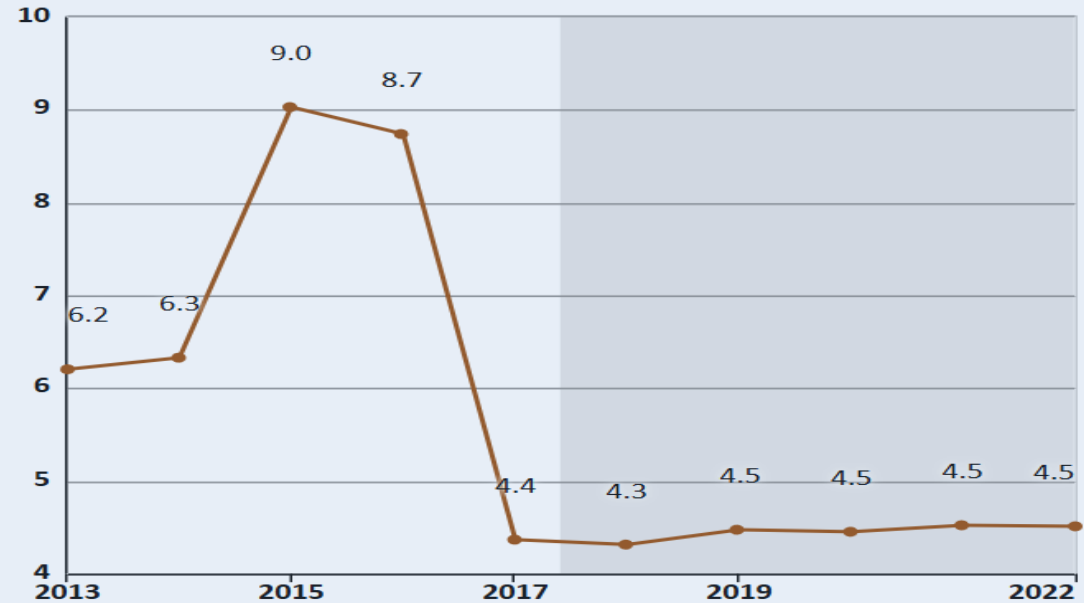
International Monetary Fund (IMF) Forecast

Real GDP Growth (% Change)



International Monetary Fund (IMF) Forecast

Average Consumer Price Inflation (% Change)





ABOUT **UNION**

Union TI is an innovative and fast-growing company changing the way companies use Service Management. We deliver real time integrated services and Business Intelligence for decision taking. For the customers who use our services, it represents lower costs, integrated data and better operational results.

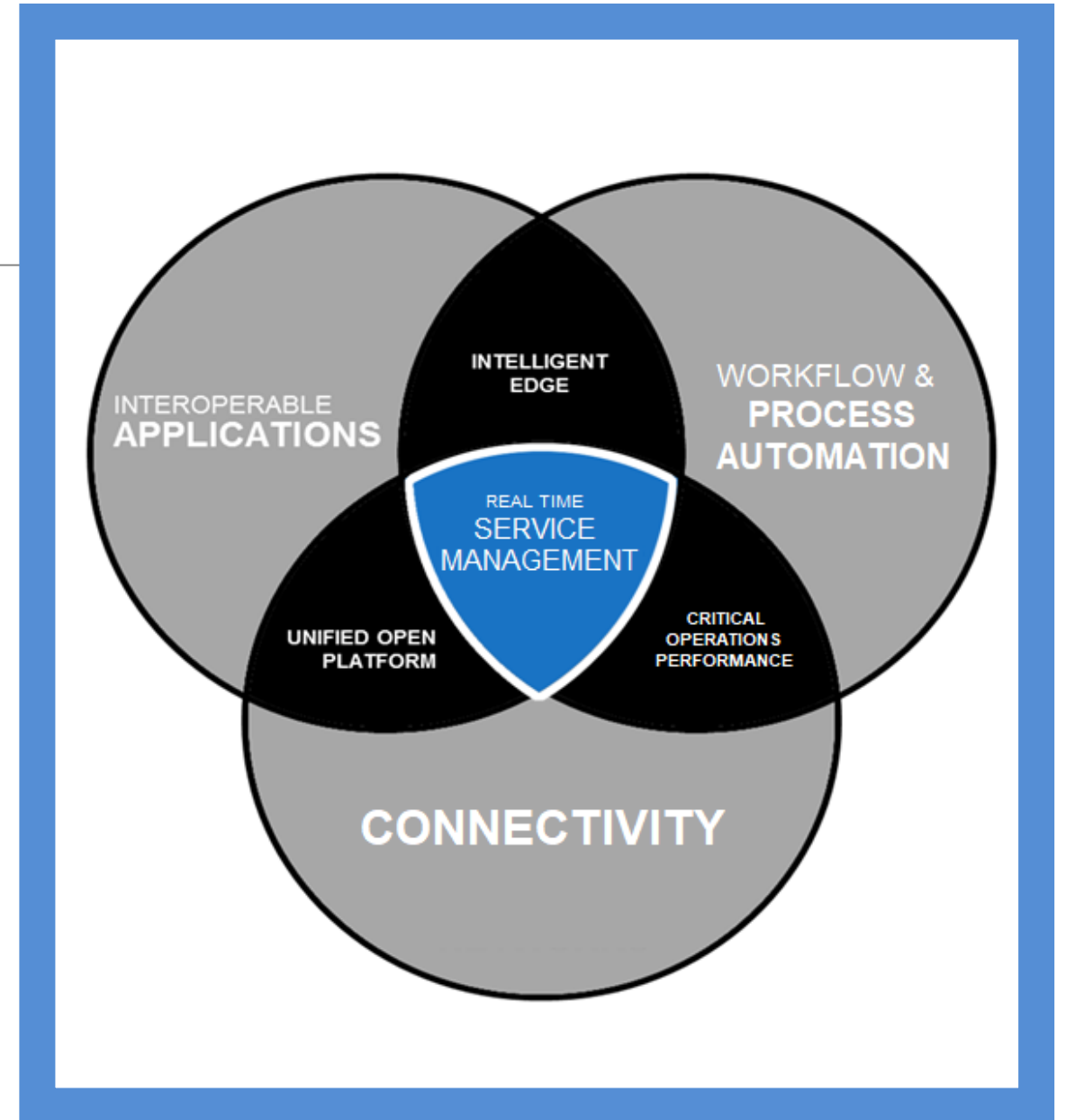
We develop innovative solutions for Smart Cities, Smart Farm, Service Management and Smart Health, tailored to each customer and enabling them to capture and integrate data from different systems and devices. So the customers are able to manage effectively their business and take actions in real time.



PLATFORM

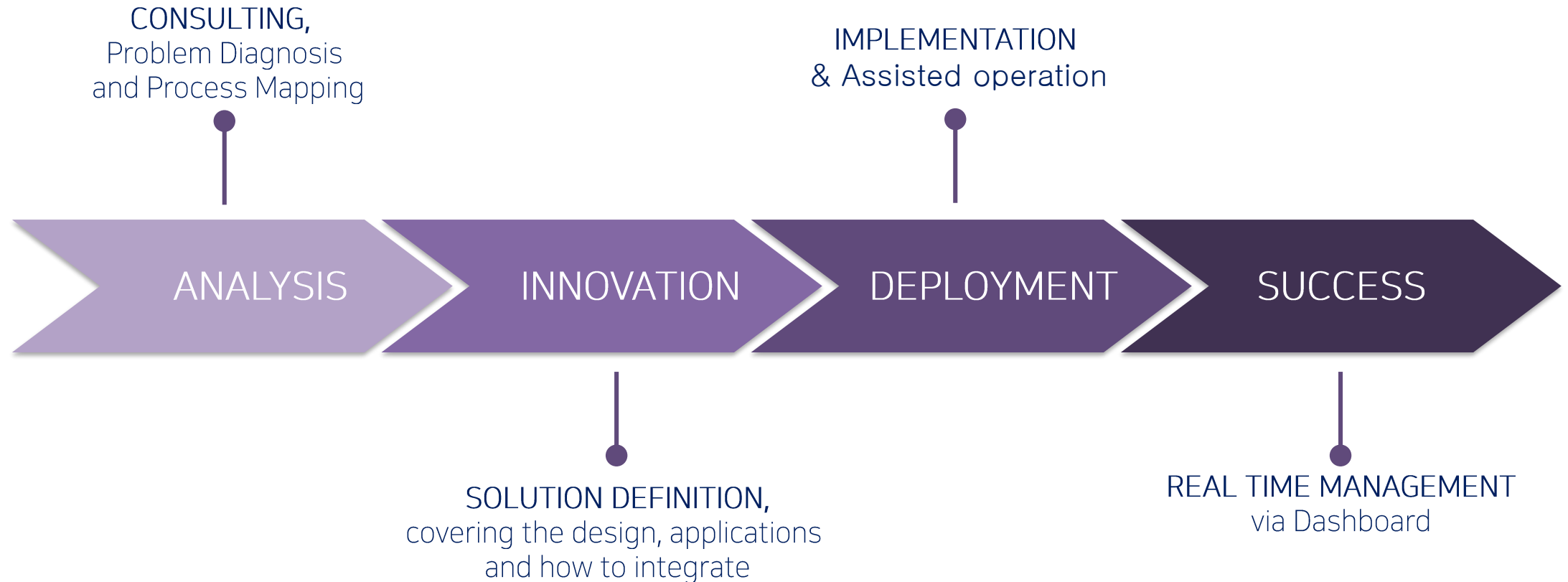
model

- Real time information presented via **DASHBOARD**
- Integrated with Workflow and **PROCESS AUTOMATION** modules
- **CONNECTIVITY** via existent infra (LTE, GPRS, 2-Way radios, etc)
- **APPLICATIONS** varies per customer needs. Examples: facial recognition, location, telemetry, etc
- **VERTICALS:** Smart Cities, Smart Farm and Service Management



BUSINESS

model





functionalities

- **MONITOR** the production process via workflow
- **CONTROL** the mobile assets via location coordinates and telemetry (tires, fuel, etc)
- Process automation and **INCIDENT ESCALATION** minimize the downtime
- Field team management with location, tasks, and **AUTOMATED ALARMS** to maximize the productivity
- Data can be displayed via **DASHBOARD** for real time management
- **COMMAND & CONTROL CENTER** may be part of the solution



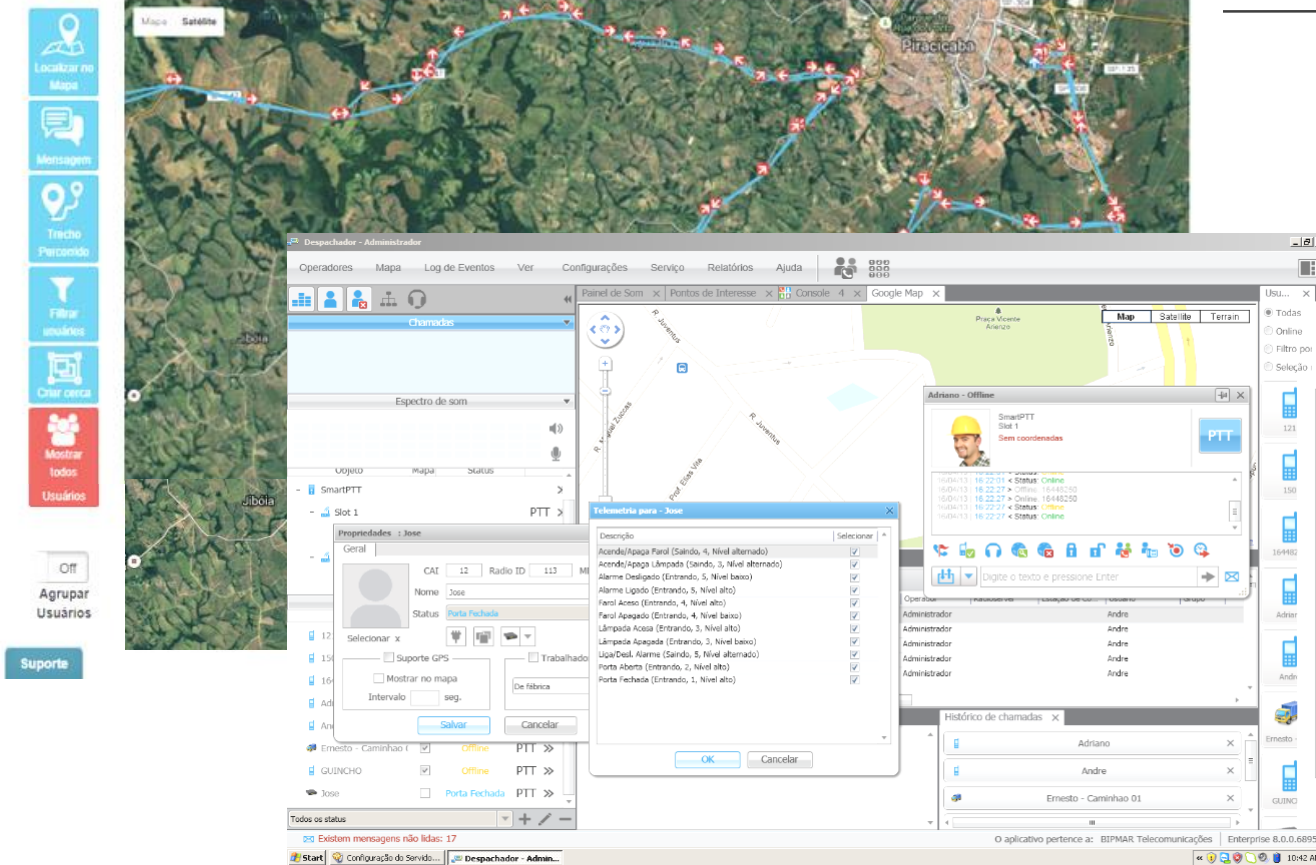
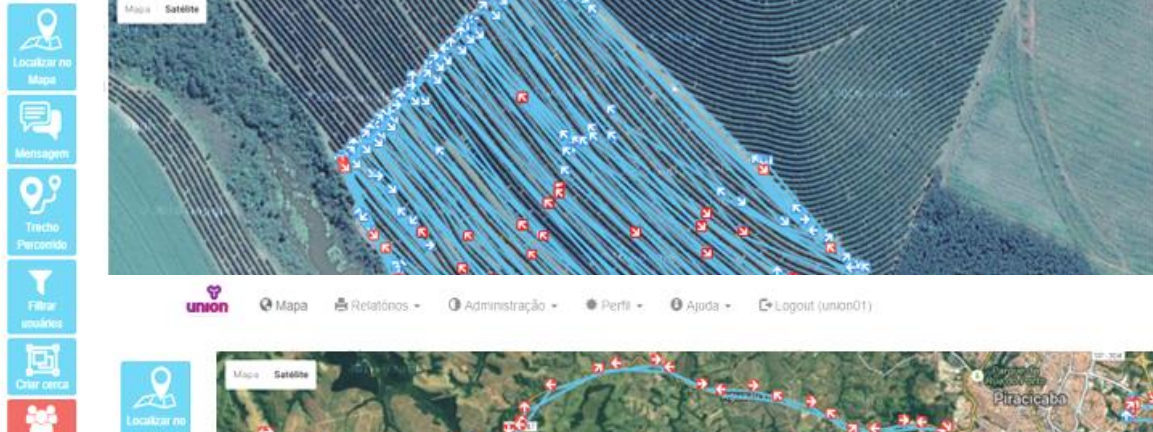
ecosystem



- **RISK AND SERVICE MANAGEMENT**, optimizing margins, reducing operational costs and monitoring risk positions
- **GRAIN STORAGE** solution
- **CONNECTIVITY** via 2-way radios, reusing the existent customer infrastructure
- **MAPPING** solution, allowing to visualize the status of teams and asset location, create geofence actions
- **DEPLOYMENT** of SSC (Shared Services Center), Command and Control Centers, etc
- **CYBERSERURITY** solution



ongoing projects



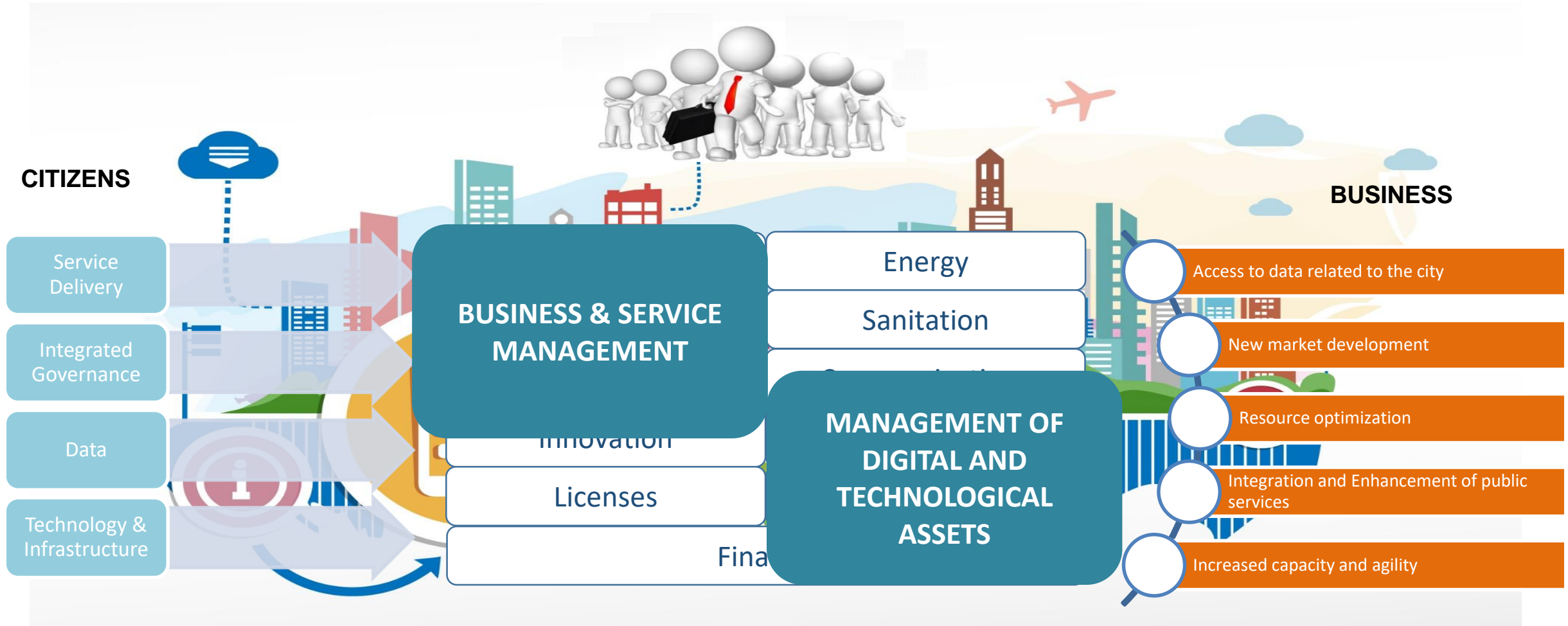


INTEREST

technologies – Smart Farm



- Smart sensors
- Water management
- Connectivity
- Big data analysis
- Precision agriculture





- **SERVICE PORTAL** for interacting with citizens
- **MONITOR** the assets via workflow and geofence
- **CONTROL** the vehicles via location coordinates and telemetry (auditing, preventive maintenance, etc)
- Process automation and **INCIDENT ESCALATION** for quick response
- Management of workers in the field via location, tasks, and **AUTOMATED ALARMS** to optimize the resources
- **COMMAND & CONTROL CENTER** may be part of the solution and may integrate all municipality services



- **FACIAL RECOGNITION** for access control and suspect identification
- **INTEGRATION** with existent customer softwares and applications
- **MAPPING** solution, wich allows to visualize the status of teams and asset location, create geofence actions
- **DEPLOYMENT** of SSC (Shared Services Center), Command and Control Centers, etc
- **CYBERSERCURITY** solution



cases & ongoing projects





INTEREST

technologies – Smart Cities

- Environmental sensors
- Public Safety solutions: smart sensors, access control, video analytics
- Water management
- Smart traffic
- Waste management
- Internet connectivity
- Big data analysis

technology PARTNERS



ZEBRA

easyVISTA™

NEC



how to **CONTACT US**



Condomínio Vista Verde Offices
Av. Queiroz Filho, 1560
Torre Gaivota – Sala 14
Zip Code: 05319-000
City: São Paulo – SP
Brazil



+55 11 4003 5159



contato@unionti.com.br



www.ufarm.com.br
www.unionti.com.br
www.ucity.com.br



THANK YOU!

Rogério Higa
rogerio.higa@nrpar.com.br